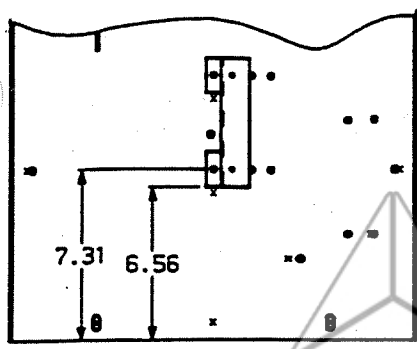
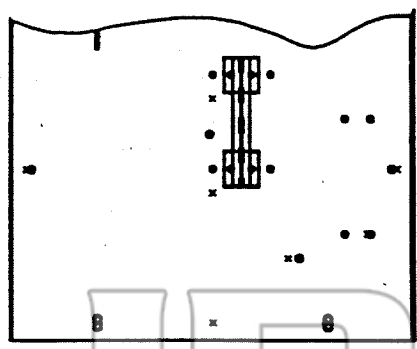
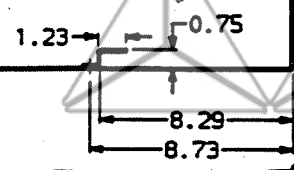


REV	ECO	BY	DATE	A	B	C	D	E	F	G



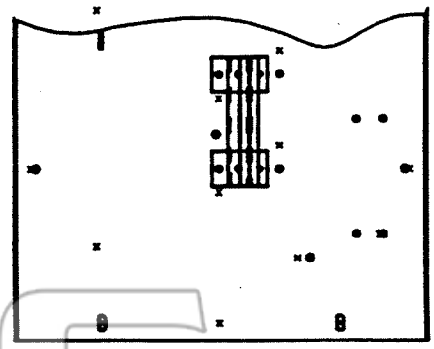
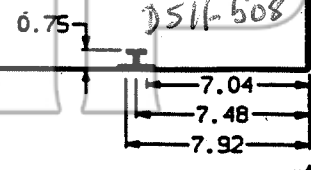
DS-206

*DSII-308*



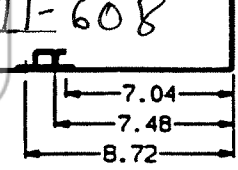
DS-206H

*DSII-508*

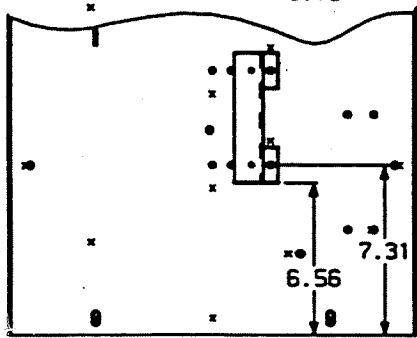


DS-206E

*DSII-608*

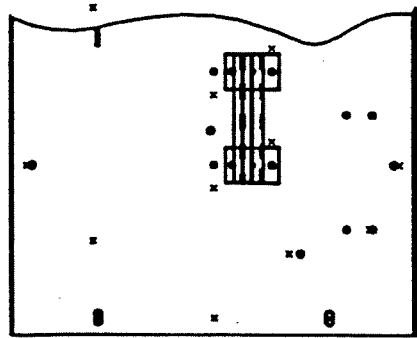
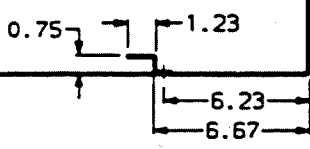


1.0  
5.81 ±.01



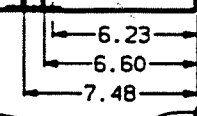
DS-416

*DSII-516*

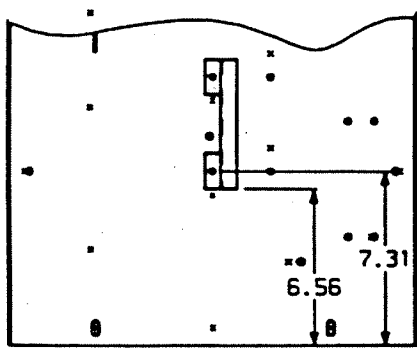


DS-416H/420

*DSII-616/620*

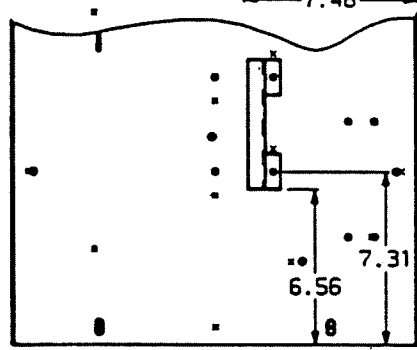
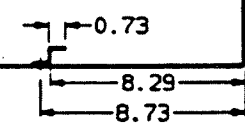


store.ips.us



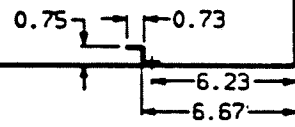
DSL-206

*DSLII-308*

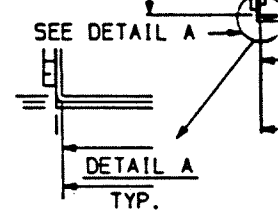


DSL-416

*DSLII-516*



18.54 ±.15



STANDARD TOLERANCE UNLESS OTHERWISE SPECIFIED	LINEAR DIMENSIONS	ONE PLACE DECIMAL ± .060 TWO PLACE DECIMAL ± .030 THREE PLACE DECIMAL ± .015	DESIGN LOC: 68	USED ON: ---
	HOLE DIMENSIONS	PUNCHED/DRILLED ± .005	DRAWN BY: BF/GL	RAWSTOCK: ---
	ANGLES	DIMENSIONED ± 1° UNDIMENSIONED 90° ± 2°	CHECKED BY: ---	MATERIAL DESCRIPTION: ---
			ENGINEER: ---	FINISH DESCRIPTION: ---

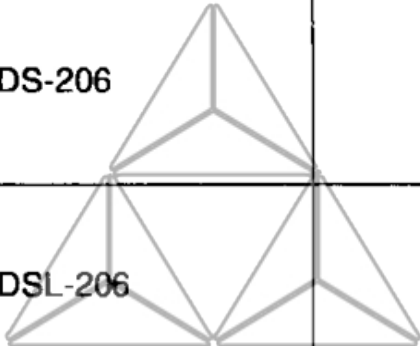
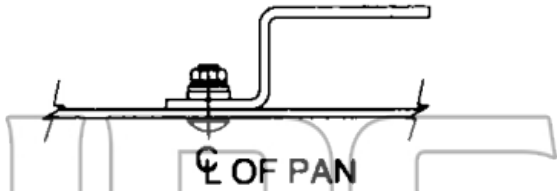
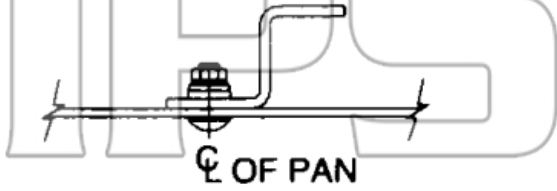
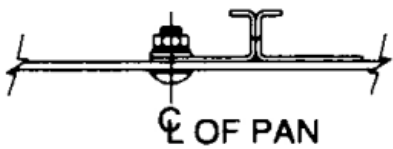
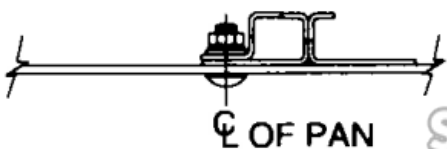
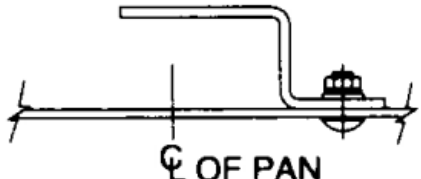
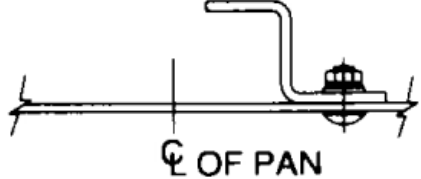

BREAKER TYPE	BRACKET ARRANGEMENT
DS-206 	 ☿ OF PAN
DSL-206	 ☿ OF PAN
DS-206H	 ☿ OF PAN
DS-206E	 ☿ OF PAN
DS-416	 ☿ OF PAN
DSL-416	 ☿ OF PAN
DS-416H DS-420 DS-416C DS-420C	 ☿ OF PAN

Fig. 3-7 DS Interface Interlocks

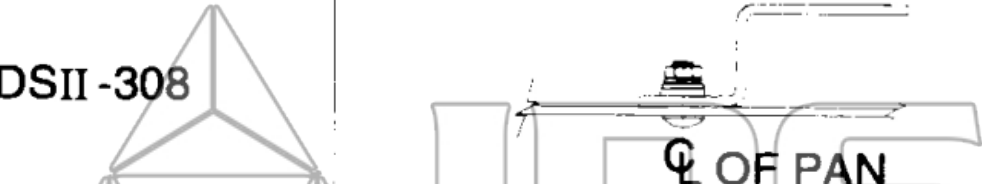
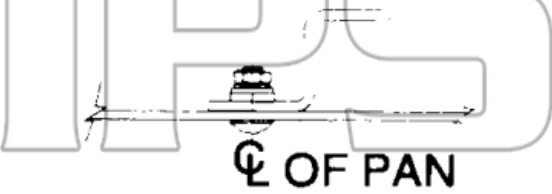
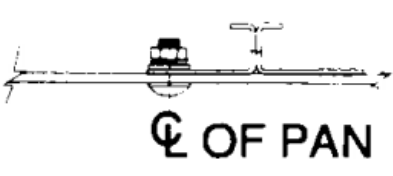

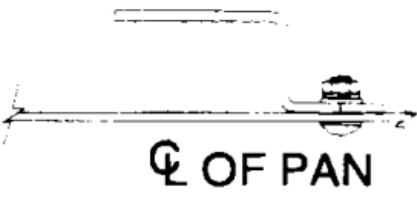

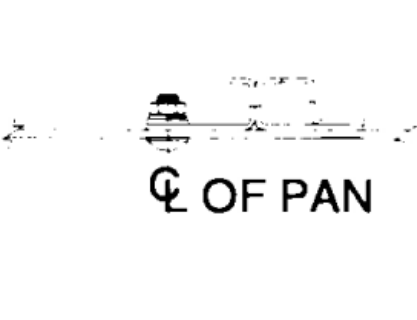
BREAKER TYPE	BRACKET ARRANGEMENT
DSII-308	
DSLII-308	
DSII-508	
DSII-608	
DSII-516	
DSLII-516	
DSII-616 DSII-616C DSII-620 DSII-620C	

Fig. 3-7 DSII Interference Interlocks