

8

7

6

5

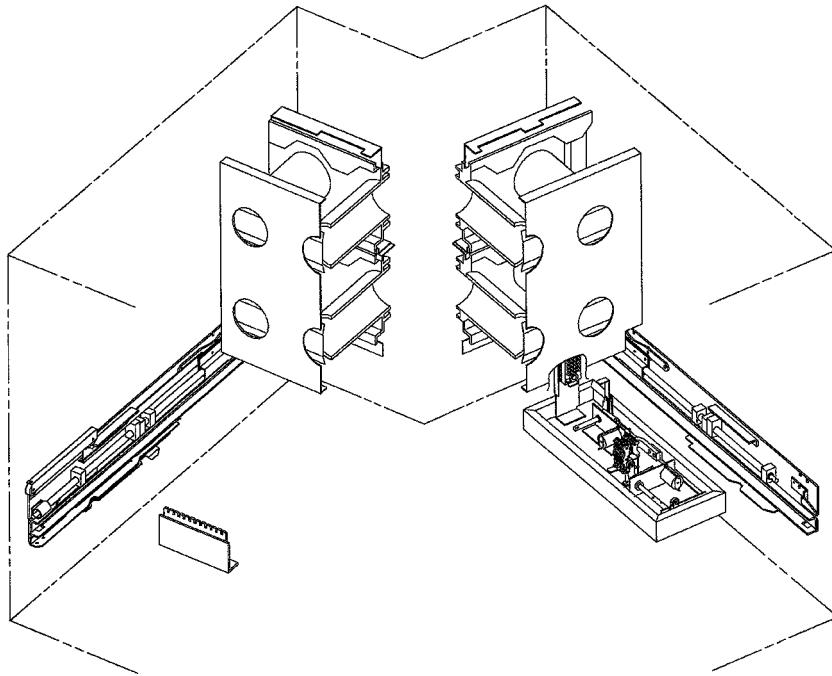


4

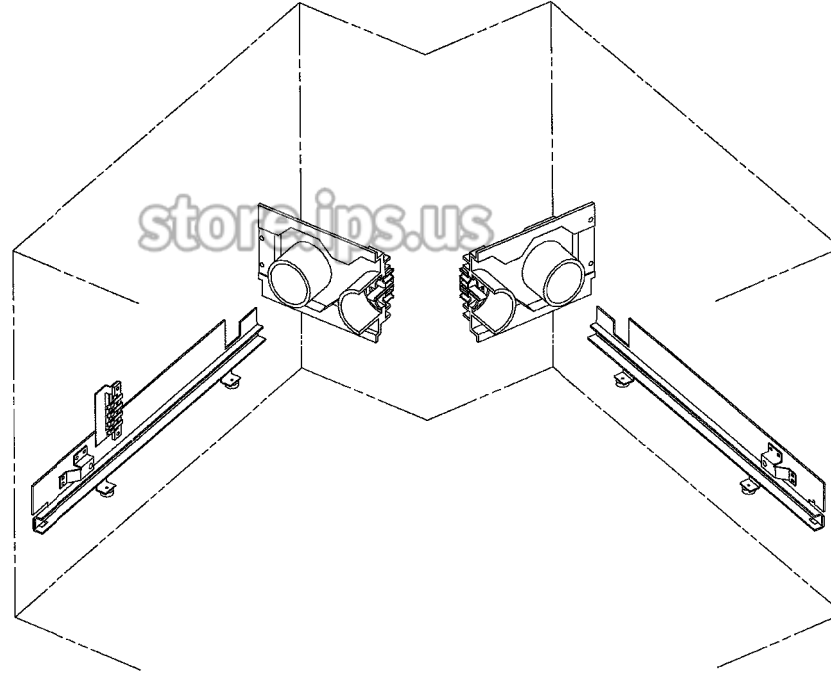
3

1

REVISIONS			
REV	DESCRIPTION	DATE	APPROVED



BREAKER COMPARTMENT KIT



ROLL-OUT COMPARTMENT KIT

D
C
B

014402915

FOR INTERPRETATION OF DRAWINGS SEE 02B2A3025

GE (USA) CONFIDENTIAL AND PROPRIETARY
 This GE document contains confidential and proprietary information of GE. Its disclosure, distribution or control is restricted. It is loaned on condition that it, and the information therein, shall not be used by recipient, nor be disclosed to others except as expressly approved by GEAC. Any document containing such information shall be returned on request.

UNLESS OTHERWISE SPECIFIED	SIGNATURES	DATE	 BURLINGTON, IA
DIMENSIONS ARE IN INCHES	DRAWN D.W. BOEN	07/21/02	
TOLERANCES UNLESS OTHERWISE SPECIFIED	CHECKED		
1 P.L. DECIMALS 0.000	ENGINEER	04/23/02	TITLE
2 P.L. DECIMALS 0.000	ISSUED	5-19-02	2 HIGH POWER/VAC OEM INTERFACE
ANGLES 30°	W.E.	5-12-03	OEM INTERFACE
FRACTIONS 1/16	D.W.	5-27-02	IF FIRST MADE FOR POWER/VAC OEM
	DRAWING FILE	014402BIESHOI	REV D
	REFERENCE FILE		GEN. NO. 014402915
			PL. ISSUED

8

7

6

5

4

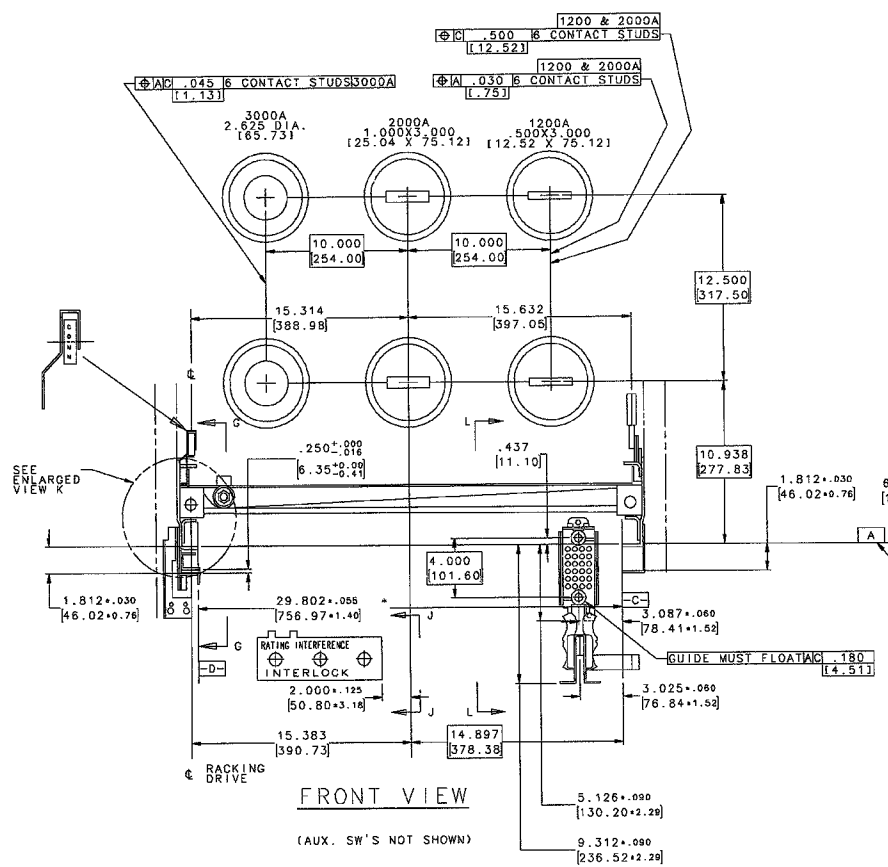
3

1

DWG NO 0144D2915 REV 2

DIMENSIONS IN BRACKETS ARE METRIC DIMENSIONS IN MILLIMETERS

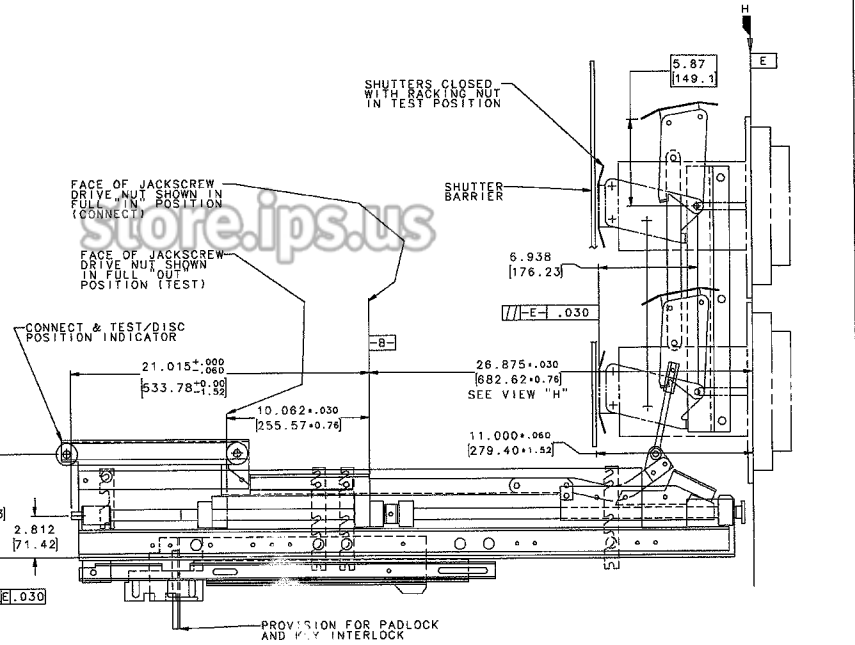
REVISIONS			
REV	DESCRIPTION	DATE	APPROVED



FRONT VIEW

(AUX. SW'S NOT SHOWN)

* CRITICAL DIM - MUST HOLD



VIEW G-G

ALL UNTOLERANCED DIMENSIONS EXCEPT THOSE MARKED BASIC ARE FOR REFERENCE ONLY

FOR INTERPRETATION OF DRAWINGS SEE 0282A3025

GE (USA) CONFIDENTIAL AND PROPRIETARY

This GE document contains confidential and proprietary information of GE Electrical Distribution & Control (ED&C). It is loaned on condition that it and the information therein shall not be used by recipient, nor be disclosed to others, except as expressly approved by ED&C. Any document containing such information shall be returned on request.

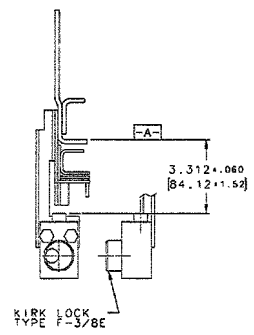
UNLESS OTHERWISE SPECIFIED: DIMENSIONS ARE IN INCHES TOLERANCES ON: 2 PL. DECIMALS ±.020 3 PL. DECIMALS ±.010 ANGLES ± 1° FRACTIONS 1/16	SIGNATURES	DATE	 BURLINGTON, IA OEM INTERFACE FIRST MADE FOR POWER/VAC OEM CALMA 0144D2915 PL ISSUED
	DRANK D.V. DONN	08/24/92	
	ENG'D	5/12/93	
	ISSUED	5/12/93	
	D.E.	7-7-93	
DRAWING FILE	SIZE	DWG NO	PL GENERATED
0144D2915SH02	D	0144D2915	3

IPS

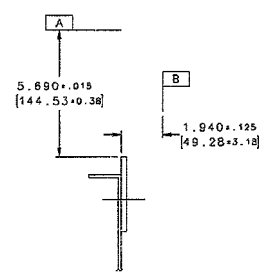
REVISIONS			
REV	DESCRIPTION	DATE	APPROVED

DIMENSIONS IN BRACKETS
ARE METRIC DIMENSIONS
IN MILLIMETERS

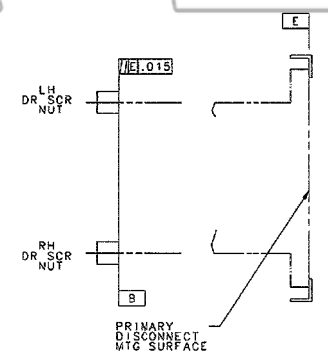
ALL UNTOLERANCED DIMENSIONS
EXCEPT THOSE MARKED (AS SHOWN)
ARE FOR REFERENCE ONLY



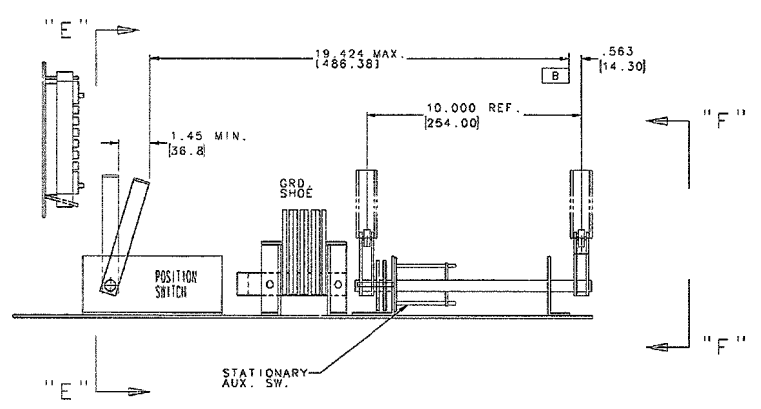
VIEW K



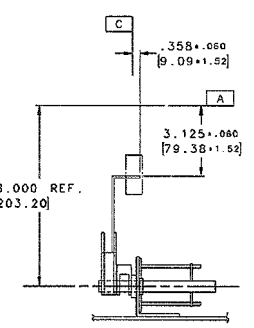
INTERFERENCE PLATE
VIEW "J-J"



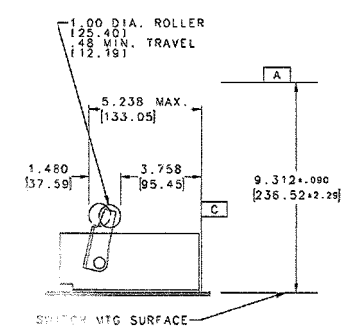
VIEW H



VIEW "L-L"
(PARTIAL)



VIEW "E-E"



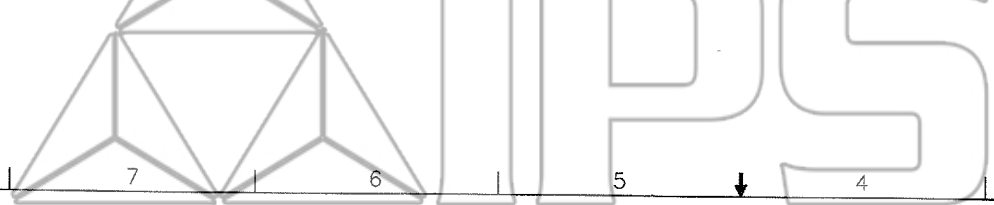
VIEW "F-F"
(FRONT)

FOR NON-ROLL-IN BREAKER

FOR INTERPRETATION OF DRAWINGS SEE 0282A3025

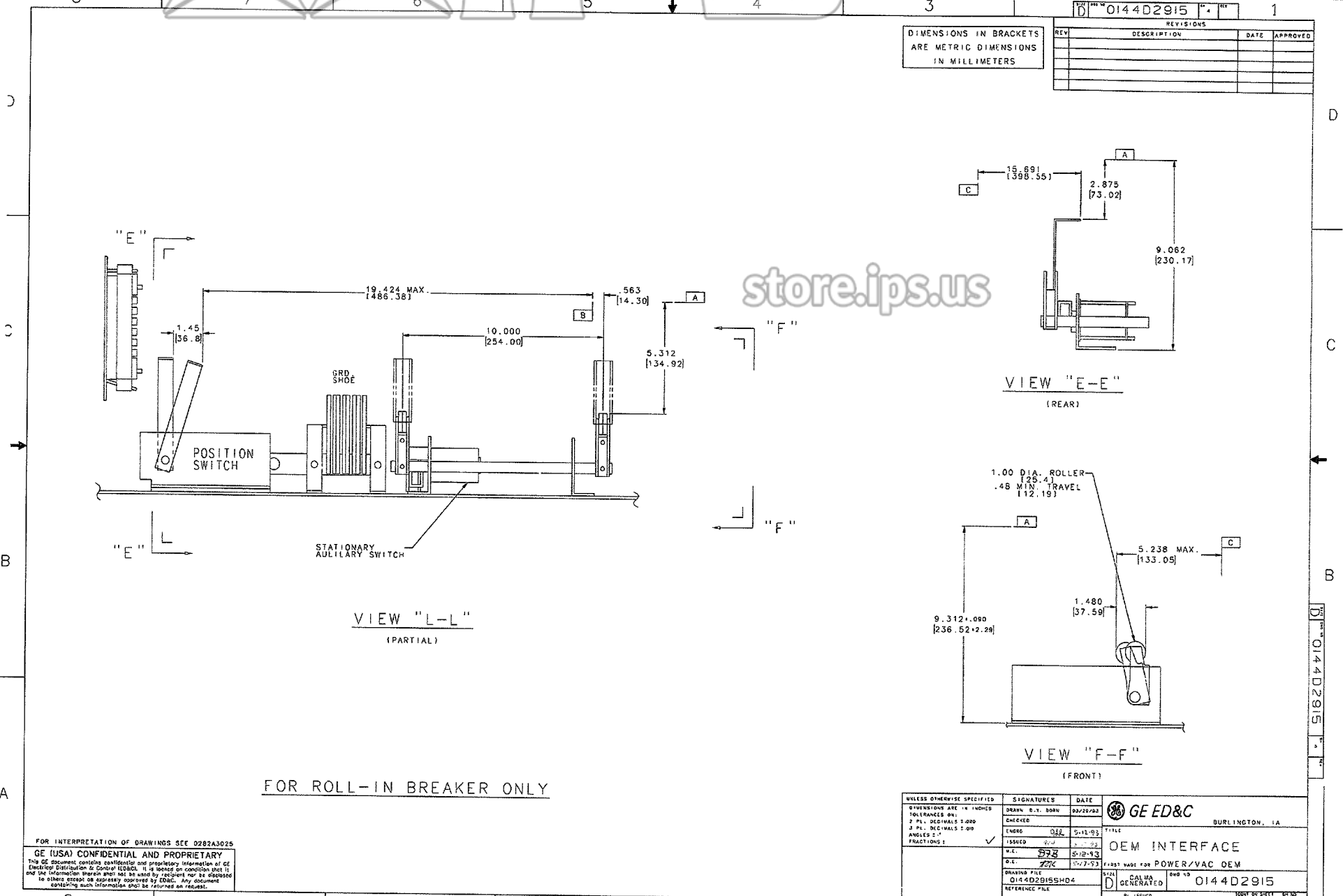
GE (USA) CONFIDENTIAL AND PROPRIETARY
This GE document contains confidential and proprietary information of GE
Electric Distribution & Control (ED&C). It is loaned on condition that it
and the information therein shall not be used by recipient nor be disclosed
to others except as expressly approved by ED&C. Any document
containing such information shall be returned on request.

UNLESS OTHERWISE SPECIFIED DIMENSIONS ARE IN INCHES TOLERANCES ON: 1 PL. DECIMALS ± .005 2 PL. DECIMALS ± .002 3 PL. DECIMALS ± .001 ANGLES 1°	SIGNATURES DRAWN D. H. DORN CHECKED ENGR ISSUED REV DATE 5-12-93 5-12-93 7-17-93	DATE 02/24/92	TITLE OEM INTERFACE REV NO 014402915
GE ED&C BURLINGTON, IA	DATE 5-12-93	REV NO 014402915	REV NO 014402915
DRAWING FILE 0144029155H03	DATE 5-12-93	REV NO 014402915	REV NO 014402915



REVISIONS			
REV	DESCRIPTION	DATE	APPROVED

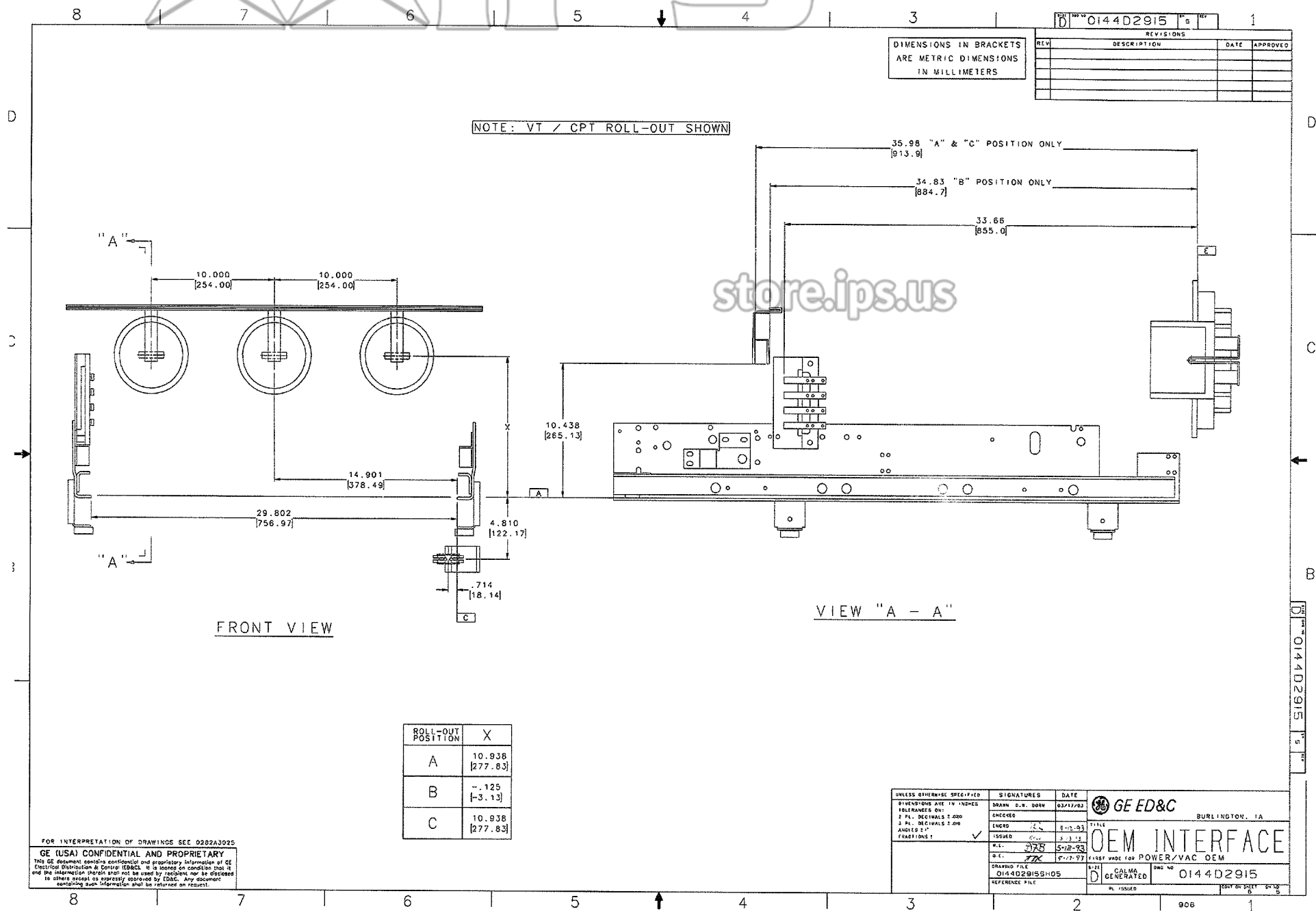
DIMENSIONS IN BRACKETS
ARE METRIC DIMENSIONS
IN MILLIMETERS

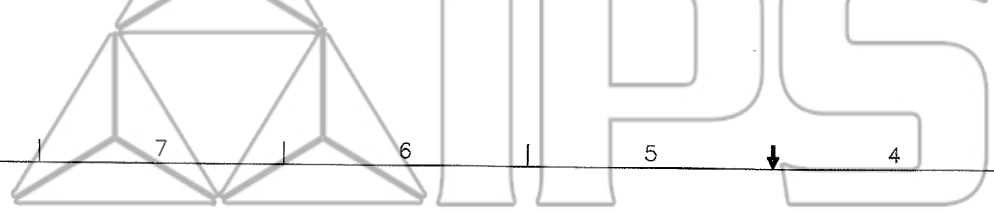


FOR ROLL-IN BREAKER ONLY

FOR INTERPRETATION OF DRAWINGS SEE 0282A3025
GE (USA) CONFIDENTIAL AND PROPRIETARY
 This GE document contains confidential and proprietary information of GE. Reproduction, distribution or disclosure of this document is prohibited without the prior written consent of GE. Any document containing such information shall be returned on request.

UNLESS OTHERWISE SPECIFIED	SIGNATURES	DATE	 GE ED&C BURLINGTON, IA
DIMENSIONS ARE IN INCHES TOLERANCES ARE: 2 PL. DECIMALS ±.000 3 PL. DECIMALS ±.000 ANGLES ±1° FRACTIONS ±	DRAWN: D.T. BORN 02/28/92 CHECKED: ENGR: [Signature] 5-11-93 ISSUED: [Signature] 5-11-93 W.E.: [Signature] 5-12-93 D.L.: [Signature] 5-7-93	TITLE OEM INTERFACE FIRST MADE FOR: POWER/VAC OEM CALMA GENERATED: 0144D2915 PL. ISSUED: 908	

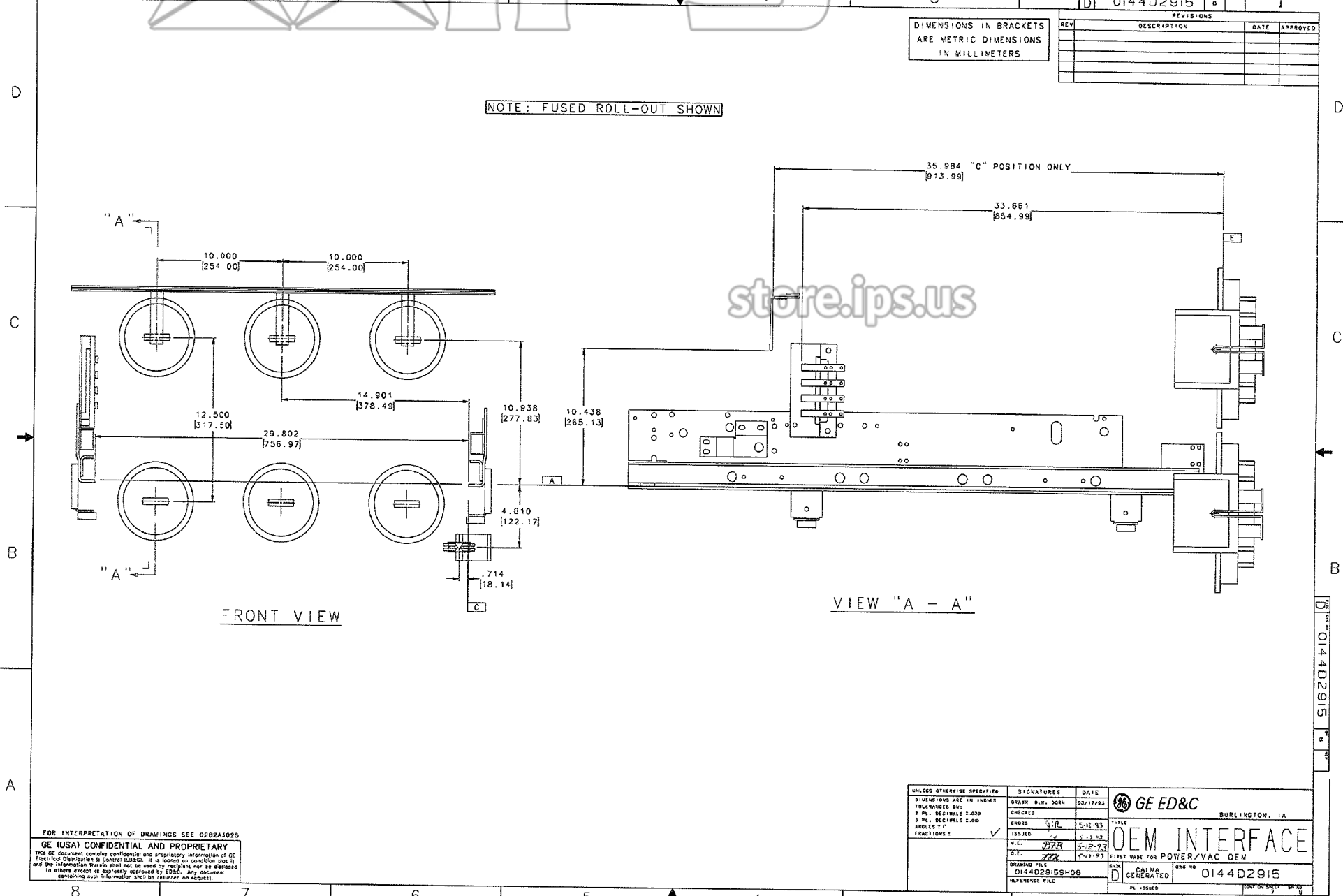




REVISIONS			
REV	DESCRIPTION	DATE	APPROVED

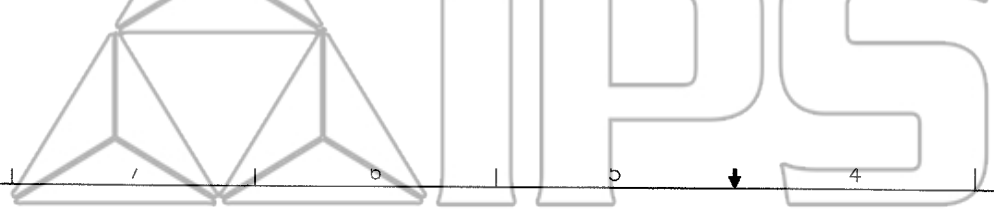
DIMENSIONS IN BRACKETS
ARE METRIC DIMENSIONS
IN MILLIMETERS

NOTE: FUSED ROLL-OUT SHOWN



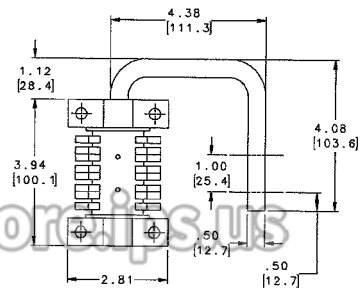
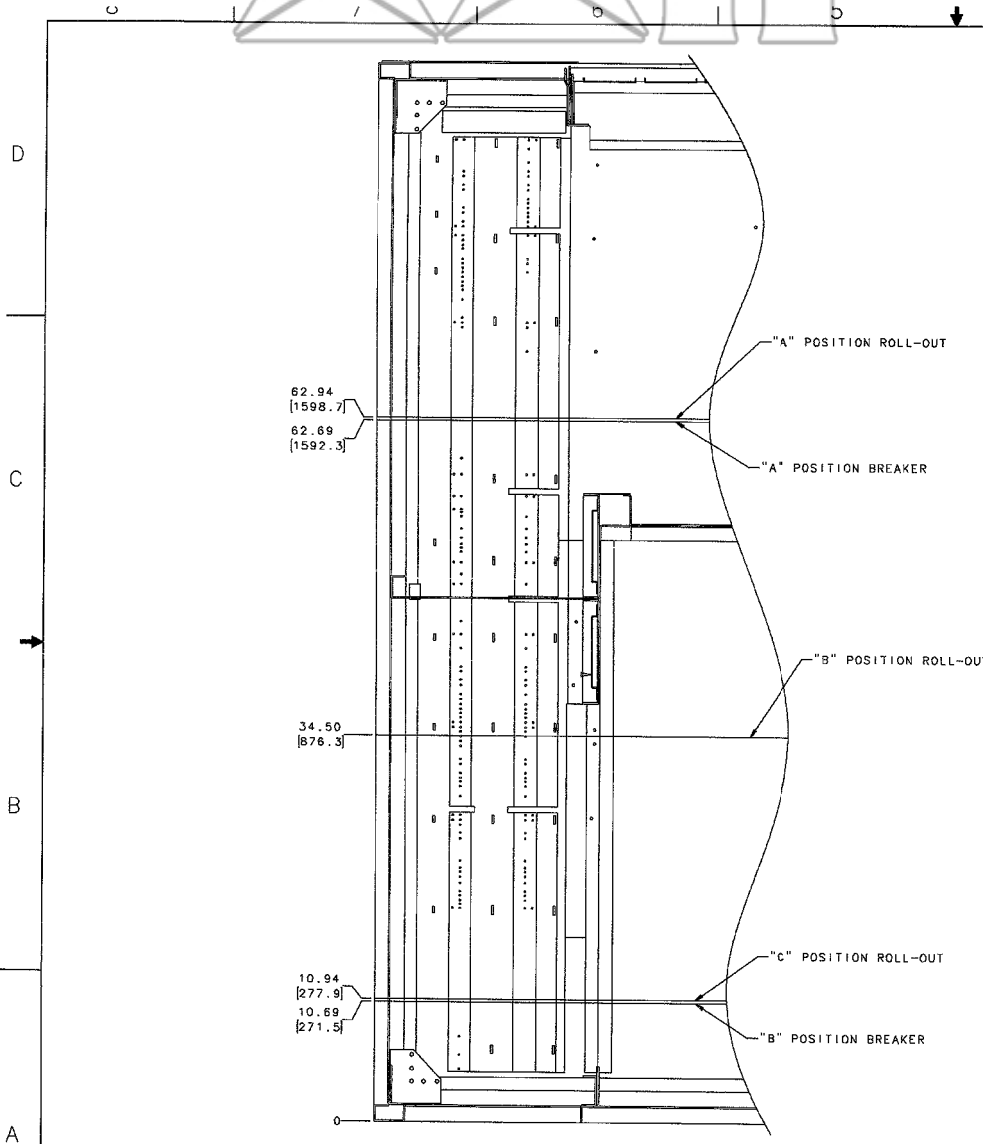
FOR INTERPRETATION OF DRAWINGS SEE 0282AJ025
GE (USA) CONFIDENTIAL AND PROPRIETARY
 THIS GE document contains confidential and proprietary information of GE
 Electric Division of General Electric. It is loaned on condition that it
 and the information therein shall not be used by recipient nor be disclosed
 to others except as expressly approved by GE. Any document
 containing such information shall be returned on request.

UNLESS OTHERWISE SPECIFIED DIMENSIONS ARE IN INCHES TOLERANCES ON: 2 PL. DECIMALS ±.003 3 PL. DECIMALS ±.002 ANGLES 5°	SIGNATURES DRAWN: D.T. DOB CHECKED ENGR: J.R. ISSUED: J.S. W.E.: J.P. D.L.: J.P.	DATE 02/17/83 5-12-83 5-2-83 5-2-83	 BURLINGTON, IA OEM INTERFACE FIRST MADE FOR POWER/VAC OEM
DRAWING FILE 014402915S08	612 GENERATED	ORG NO 014402915	906

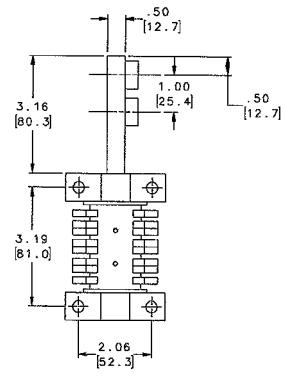


REVISIONS			
REV	DESCRIPTION	DATE	APPROVED

DIMENSIONS IN BRACKETS
ARE METRIC DIMENSIONS
IN MILLIMETERS



STYLE "A"



STYLE "B"

BREAKER GROUND FINGER ASSEMBLY

HEIGHT LOCATION OF TRACKS IN
REFERENCE TO STANDARD POWER/VAC
2 HIGH OFFERING. FOR REFERENCE
ONLY. HEIGHTS SHOWN ARE TO DATUM -A-

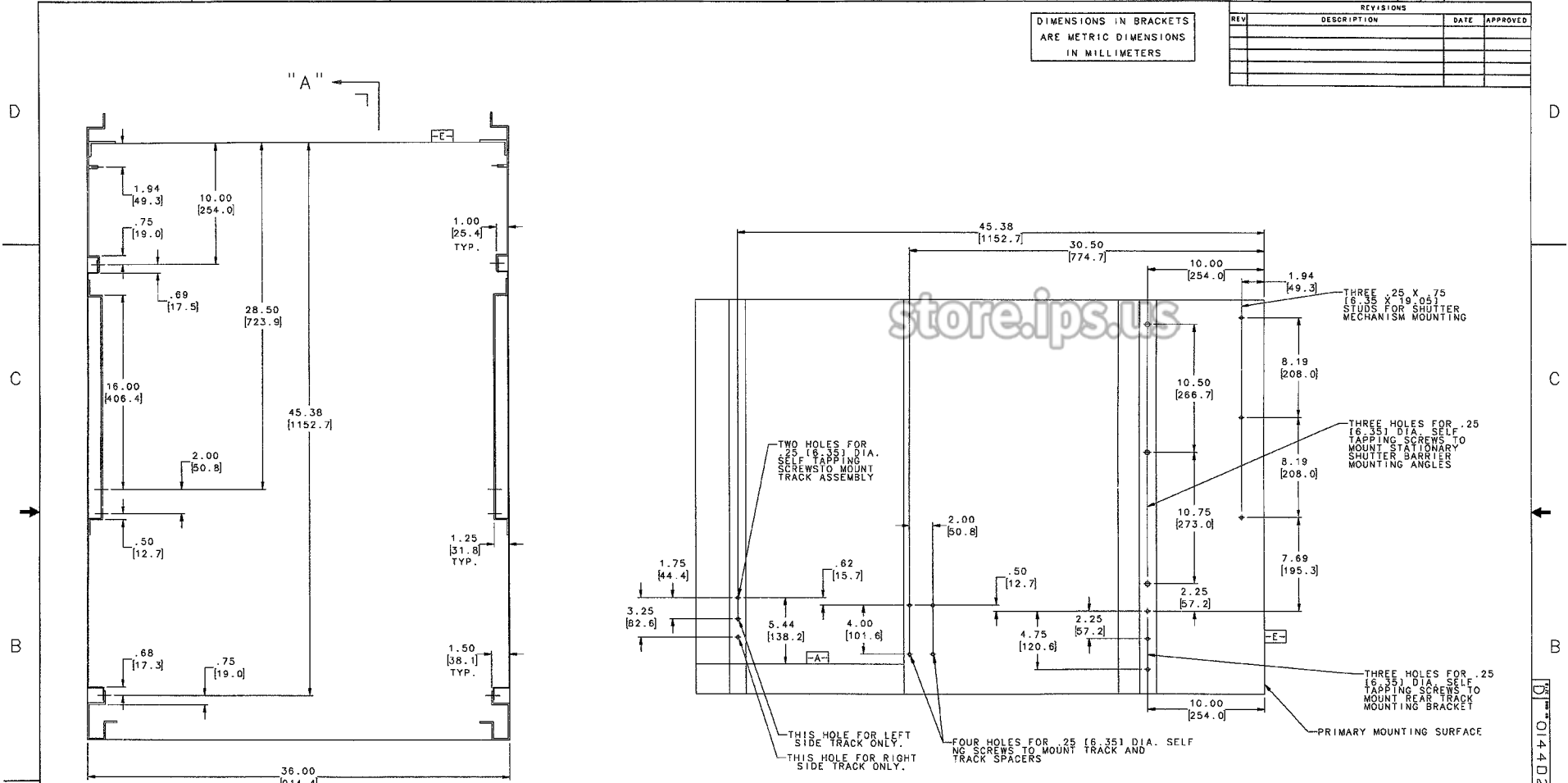
FOR INTERPRETATION OF DRAWINGS SEE 0282A3025
 GE (USA) CONFIDENTIAL AND PROPRIETARY
 This GE document contains confidential and proprietary information of GE
 Electrical Distribution & Control (ED&C). It is loaned on condition that it
 and the information therein shall not be used by recipient nor be disclosed
 to others except as expressly approved by ED&C. Any document
 containing such information shall be returned on request.

UNLESS OTHERWISE SPECIFIED	SIGNATURES	DATE	GE ED&C
DRAWING FILE 014402915SH07	DRWGR D.W. OOK	10/10/97	BURLINGTON, IA
REFERENCE FILE	CHECKED 012	5-12-93	TITLE POWER/VAC KITS OEM INTERFACE
	ISSUED 2/28	5-13-93	PART NAME FOR POWER/VAC OEM
	D.E. 2/28	5-17-93	SIZE D
	GENERATED		DWG NO 014402915
			PL ISSUED

8 | 7 | 6 | 5 | 4 | 3 | 1

DIMENSIONS IN BRACKETS
ARE METRIC DIMENSIONS
IN MILLIMETERS

REVISIONS			
REV	DESCRIPTION	DATE	APPROVED



SECTION "A-A"
COMPARTMENT KIT MOUNTING LOCATIONS
(TYPICAL, BOTH SIDES)

TOP VIEW
SHOWING COMPARTMENT
KIT MOUNTING LOCATIONS

FOR INTERPRETATION OF DRAWINGS SEE 0282A3025
GE (USA) CONFIDENTIAL AND PROPRIETARY
 This GE document contains confidential and proprietary information of GE
 Electrical Distribution & Control (ED&C). It is loaned on condition that it
 and the information therein shall not be used by recipient, nor be disclosed
 to others except as expressly approved by ED&C. Any document
 containing such information shall be returned on request.

UNLESS OTHERWISE SPECIFIED	SIGNATURES	DATE	 BURLINGTON, I.A.
DIMENSIONS ARE IN INCHES TOLERANCES ON: 1 PL. DECIMALS 2.000 2 PL. DECIMALS 2.000 ANGLES 2° FRACTIONS 1/16	DRAWN: S.W. DORN ENGRD: ISSUED: 1/12/83 W.E.: D.L.:	03/25/83 5-12-83 5-12-83 1-12-83	
DRAWING FILE 0144D2915SH08	PL 15515D	DWG NO 0144D2915	COPY ON SHEET FINAL 8