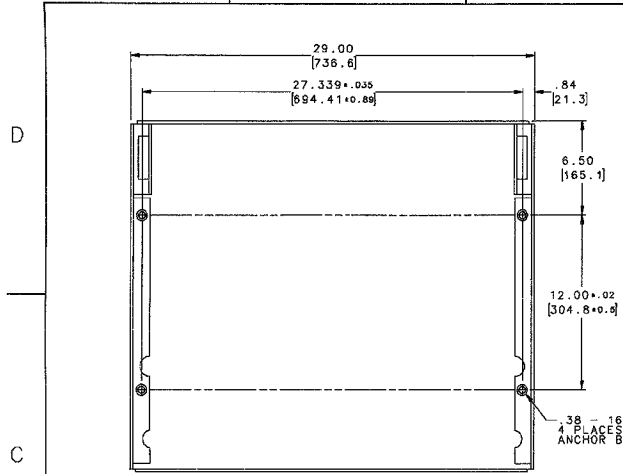


0144D2954

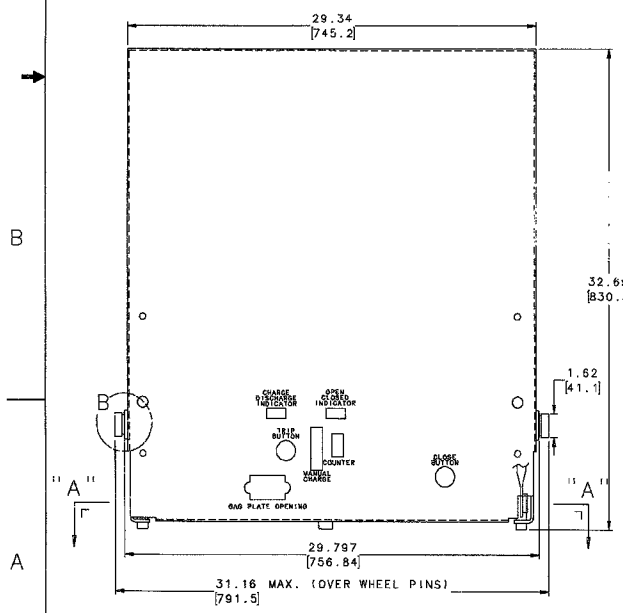
NOTES:

- 1) DIMENSIONS ARE GIVEN IN INCHES OVER MILLIMETERS.
- 2) ALL UNTOLERANCED DIMENSIONS ARE FOR REFERENCE ONLY.
- 3) THIS AREA MUST BE FREE OF OBSTRUCTIONS THAT MIGHT INTERFERE WITH MECHANISM INTERLOCKS. (BOTH SIDES)
- 4) THE THREE WHEELS ON BOTTOM OF BREAKER ARE DESIGNED ONLY FOR TRANSPORTING BREAKER WHEN SITTING ON FLOOR. THESE WHEELS MUST NOT BE USED TO SUPPORT BREAKER WHEN IN SERVICE MODE. FRONT TO BACK OR LATERAL CHANNELS UNDER BREAKER FRAME, OR A CHANNEL SECTION (ALSO PROVIDING A ROLLING SURFACE FOR BREAKER) AS SHOWN IN VIEW B ARE SUGGESTED METHODS OF SUPPORT.

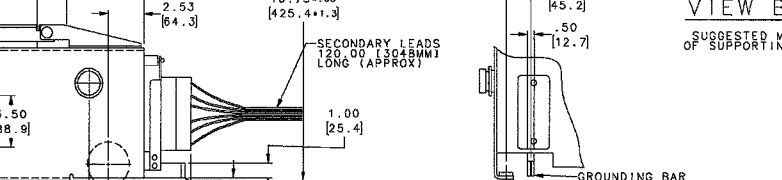
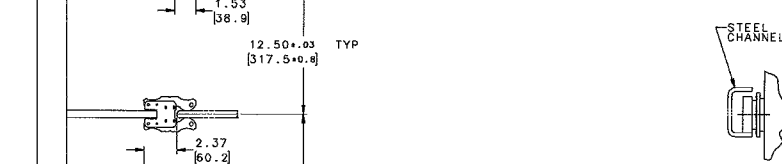
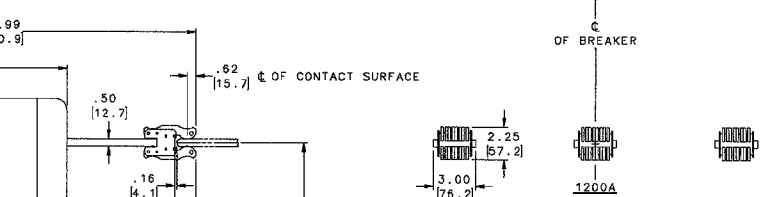
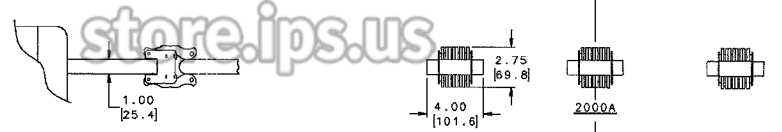
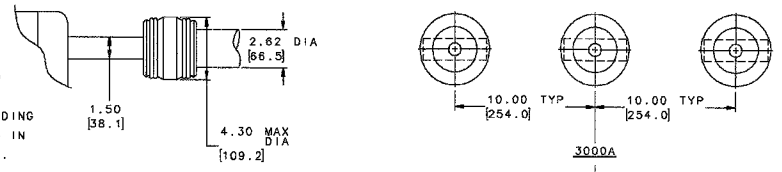
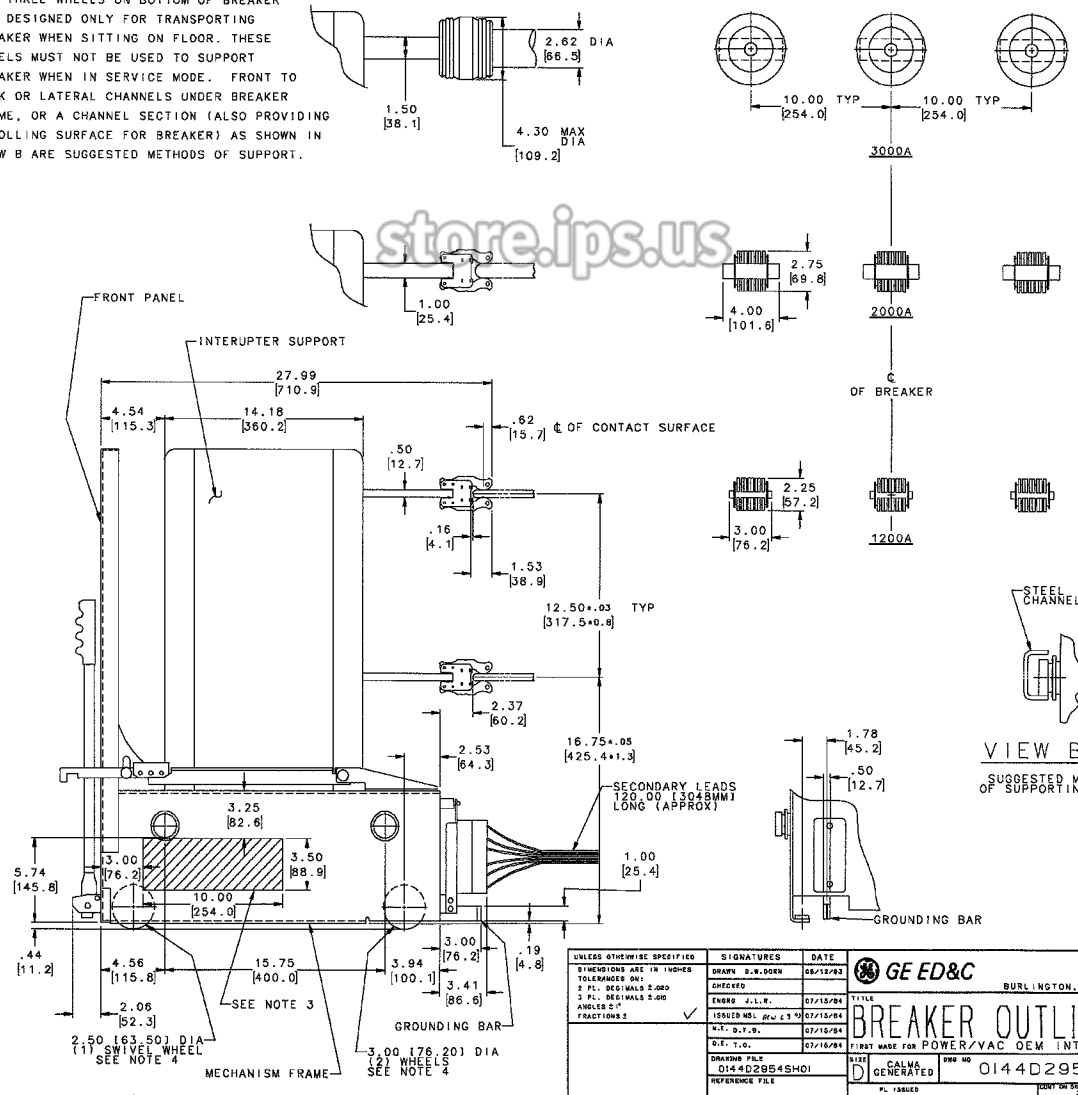
REV	DESCRIPTION	DATE	APPROVED
1	DCN # W3120	05/21/83	DW DORN



VIEW A-A
BREAKER MOUNTING

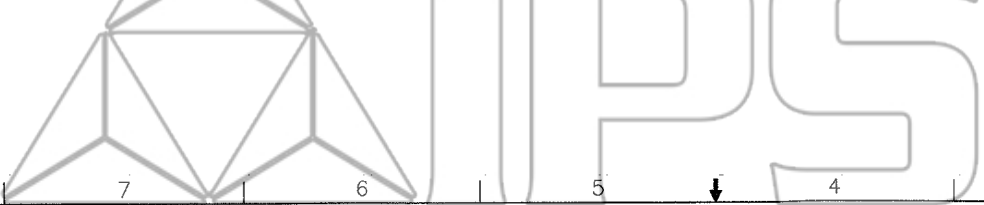


VIEW B-B
SUGGESTED METHOD OF SUPPORTING BKR.



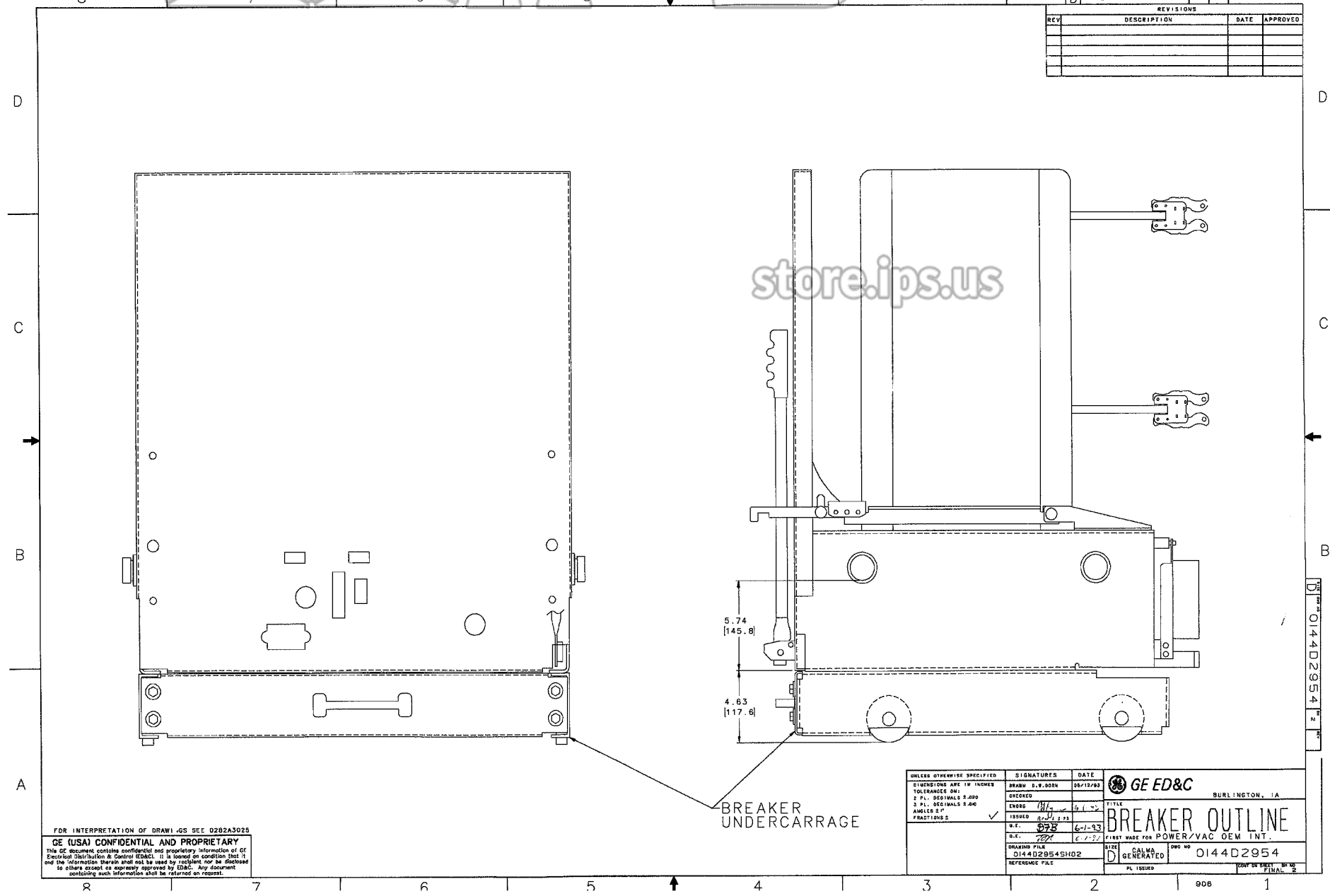
FOR INTERPRETATION OF DRAWINGS SEE 0282A3025
GE (USA) CONFIDENTIAL AND PROPRIETARY
 This GE document contains confidential and proprietary information of GE Electrical Distribution & Control (ED&C). It is loaned on condition that it and the information therein shall not be used by recipient nor be disclosed to others except as expressly approved by ED&C. Any document containing such information shall be returned on request.

UNLESS OTHERWISE SPECIFIED	SIGNATURES	DATE	GE ED&C
DIMENSIONS ARE IN INCHES	DRAWN D.W. DORN	06/12/83	BURLINGTON, IA
TELEGRAMS 001	CHECKED		
2 PL. DECIMALS 2.000	ENGRD J.L.L.R.	07/10/84	TITLE
3 PL. DECIMALS 2.000	ISSUED NSL Rev C 10	07/10/84	BREAKER OUTLINE
ANGLES 2 1/2	W.K. D.T.S.	07/10/84	FIRST MADE FOR POWER/VAC OEM INT.
	D.R. T.G.	07/10/84	DATE CALMA
	0144D2954SH01		GENERATED
			0144D2954



DWG NO 0144D2954

REVISIONS			
REV	DESCRIPTION	DATE	APPROVED



UNLESS OTHERWISE SPECIFIED	SIGNATURES	DATE	 GE ED&C BURLINGTON, IA
DIMENSIONS ARE IN INCHES	DRAWN S. W. BORN	05/12/93	
TOLERANCES DIM:	CHECKED		BREAKER OUTLINE FIRST MADE FOR POWER/VAC OEM INT.
2 PL. DECIMALS 2.000	ENG'D <i>[Signature]</i>	6-1-93	
3 PL. DECIMALS 2.000	ISSUED <i>[Signature]</i>	6-1-93	DWG NO 0144D2954 SHEET 1 OF 2 PL. ISSUED
ANGLES 2°	W.E. <i>[Signature]</i>	6-1-93	
FRACTIONS 2	DRAWING FILE	0144D2954SH02	GE GENERATED REFERENCE FILE

FOR INTERPRETATION OF DRAWING SEE 0282A3025

GE (USA) CONFIDENTIAL AND PROPRIETARY

This GE document contains confidential and proprietary information of GE. Its use is limited to the specific project for which it was prepared. It is loaned on condition that it and the information therein shall not be used by recipient, nor be disclosed to others except as expressly approved by GE. Any document containing such information shall be returned on request.